

“Welcome to our Crematory”

We warmly welcome you to Rosedale Cemetery today as you gather for this cremation service. Please know that this space has been prepared with great care and dignity to honor your loved one.

Cremation is a meaningful and personal choice—one that reflects a family’s values, traditions, or wishes. For some, it provides time and flexibility to plan memorials that reflect a unique life. For others, it is a simple and spiritual act of farewell. At Rosedale, we approach each service with the same compassion and reverence, mindful of the trust you have placed in us.

As you witness or reflect today, may this space bring a sense of peace and quiet strength. If there is anything you need or if we may assist you in any way, please do not hesitate to ask.

With our deepest sympathy,



“This is so beautifully done. Thank you to the team at Rosedale for creating such a peaceful, respectful space for families during such a tender time. The reverence and compassion in this message are truly comforting. It reminds us that even in goodbye, there is love, dignity, and grace.”

Janic E Smith

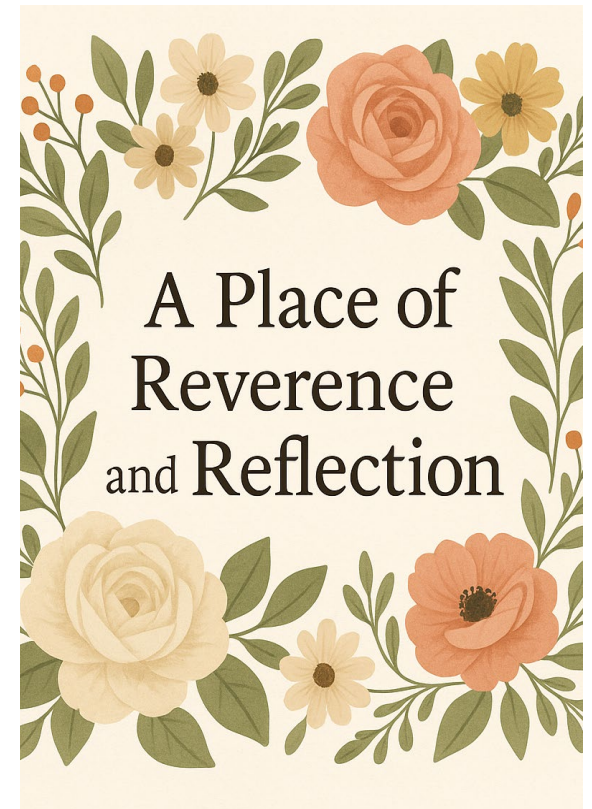
Need Assistance?

*Please don't hesitate to speak with any member of our staff.
We are here to guide and support you during this time.
Thank you for placing your trust in Rosedale.*

Contact us at
973-673-0127

or on the web at www.rosedalecemetery.org

Rosedale Cemetery & Crematory
408 Orange Road
Montclair, NJ 07042
(973) 673-0127
www.rosedalecemetery.org



Welcome to Rosedale

Chapel,
Crematory &
Witness Room





A Thoughtful Farewell

We welcome you and your family to this sacred space. Your presence here today is a testament to love, memory, and the bonds that endure beyond time.

Cremation is a personal and respectful form of disposition, chosen by many for spiritual, cultural, or practical reasons. Whether immediate or followed by future memorial services, it allows time and flexibility for families to honor their loved one's legacy.

Welcome to Rosedale Chapel, Crematory & Witness Room

We warmly welcome you to Rosedale Cemetery today as you gather for this cremation service. Please know that this space has been prepared with great care and dignity to honor your loved one.

A Place of Reverence, >>>

We warmly welcome you to Rosedale Cemetery today as you gather for this cremation service. Please know that this space has been prepared with great care and dignity to honor your loved one.

Cremation is a meaningful and personal choice—one that reflects a family's values, traditions, or wishes. For some, it provides time and flexibility to plan memorials that reflect a unique life.

For others, it is a simple and spiritual act of farewell. At Rosedale, we approach each service with the same compassion and reverence, mindful of the trust you have placed in us.

Reflection, >>>

As you witness or reflect today, may this space bring a sense of peace and quiet strength. If there is anything you need or if we may assist you in any way, please do not hesitate to ask.

At Rosedale Chapel and Crematory, every detail is prepared with care to honor your loved one's life and legacy.

Whether you gather in our witness room for a private moment or join others in our chapel for a service, we are here to provide a space of peace, respect, and compassionate support.

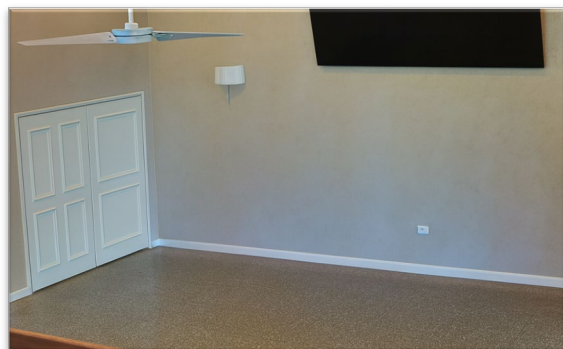
Cremation is a personal and meaningful choice—one that allows families to create tributes rooted in tradition, love, and lasting remembrance.

Respect >>>

Our witness room provides a private and reverent environment where families may:

- Spend quiet moments in reflection
- Offer final prayers or words of farewell
- Witness the beginning of the cremation process (if requested)

Our staff will guide you gently through each step, respecting your family's preferences and traditions.



Finding a cremation service that's right for you

We are honored to walk beside you through this important time.

If you have questions about cremation services or would like to tour our chapel and witness room, our team is here to help.

We are with you every step of the way >>>

